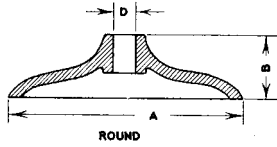


**R-4905 Series
Sign and Marker Bases**

Heavy Duty



Bases only furnished in cast iron. Special lettering available at additional cost. Cored hole for sign post is standard. Pipe tap is available if specified.

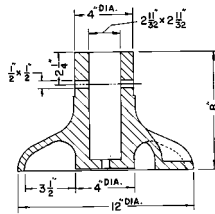
Dimensions in inches			
Catalog No.	A	B	D *
R-4905-B	15	3	1 1/2
R-4905-C	20	5	1 3/4

* Dimensions revised if specified.



**R-4907
Base Casting for Telescoping Post**

Heavy Duty



Base furnished with three holes for rigid anchorage. Round base has opening for square telescoping post. Lettering on base as shown or special lettering if specified. Also available for use with 2" diameter galvanized pipe.

Supplied By:

**TRENCHDRAIN
SUPPLY**

877-903-7246

www.trenchdrainsupply.com